

正弦波滤波器的作用是将变频器输出的 SPWM 调制波滤成近似正弦的电压波形。正弦波滤波器由高频出线电抗器、RC 回路、共模电抗器组成。在电机电压为 50Hz 时，使用正弦滤波器其畸变系数约为 5%。

The sinusoidal filter consists of HF-reactor, the SPWM modulated wave-output by the inverter can be changed to sinusoidal voltage waveform. The deformation coefficient shall be 5% by the action of sinusoidal filter when the motor frequency is 50Hz.

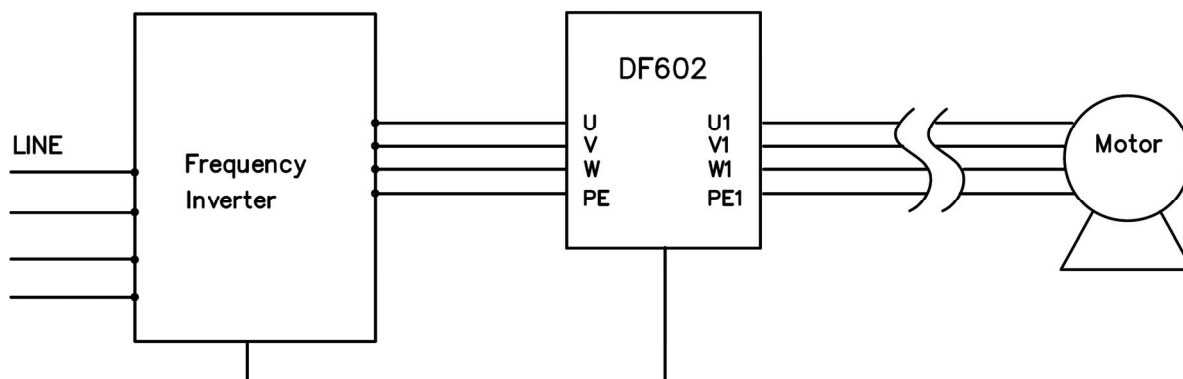
特点 Features

- 将变频器输出的 PWM 波转换为正弦波
Change SPWM modulated wave to sinusoidal waveform
- 降低电机的涡流损耗以及电机噪声
Decrease the eddy current loss and the noise of motor
- 减少输出电缆上和电机中的脉冲电流，延长电机寿命
Decrease the pulse current in the output cable and the motor and extend the life of motor
- 可在变频器与电机间使用更长的电缆连线
Longer cable can be used to connect the inverter and motor
- 减小对外的辐射，在一定场合可以使用非屏蔽电缆，降低了对现场布线的要求
Decrease the radiation, unshielded cable can be used to make wire setting easier.

技术参数 Technical Data

额定电压 Rated Voltage	380/440 VAC (690VAC)
基波频率 Motor Frequency	0~50 Hz
载波频率 Switching Frequency	2-4K Hz
过载能力 Overload Capability	1.5 倍电流持续 60 秒/10 分钟
耐压测试 Hi-pot Test	3000 VDC, 1 minutes (电容解除 Without Capacitor)
绝缘等级 Insulation Class	H (180°C)
海拔高度 Altitude	<1500 m
运行环境 Climate Category	环境温度: -25°C to +45°C; 相对湿度 ≤90%

安装示意图 Connection Diagram



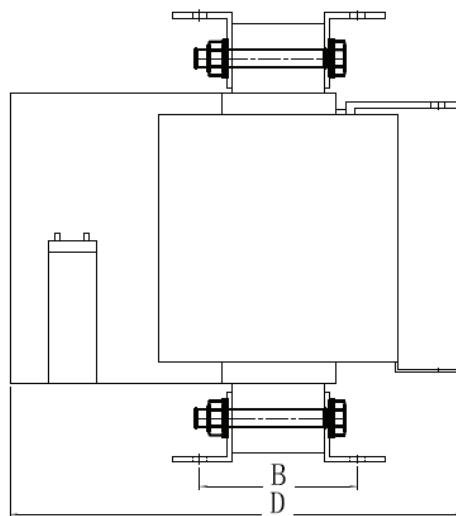
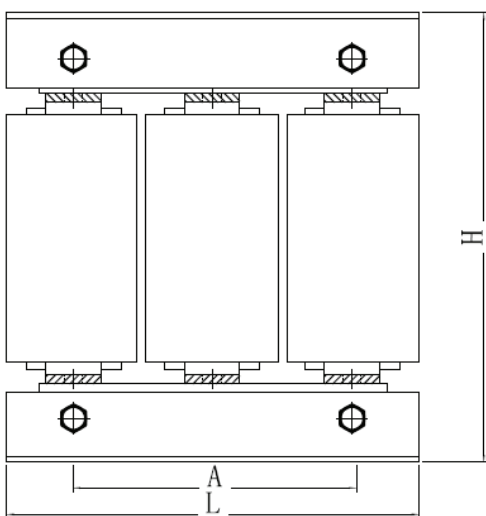
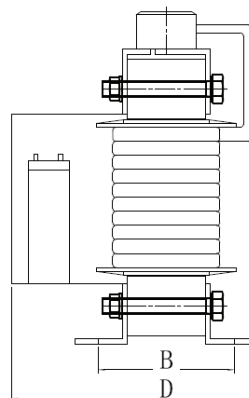
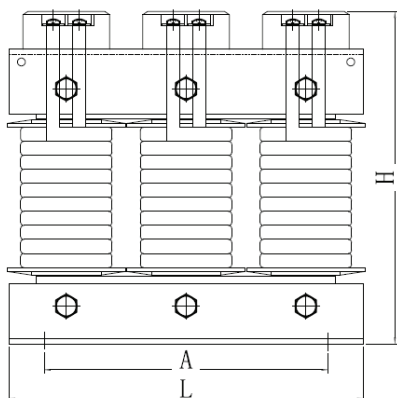
产品选型及安装事项(Product Selection And Installation Matters)

- 1、 确定变频器或电机的系统电压与正弦滤波器一致，例如: AC380V 还是 AC690V。
Confirm whether the Rated Voltage of Frequency Inverter is same. For example: AC380V or 690V.
- 2、 确定变频器或电机的功率，常规是跟变频器功率相匹配，无需放大功率选型。
Confirm whether the rated Power of Inverter or Moter is the same. No need chose higher rate.
- 3、 正弦波滤波器安装分进线出，变频器输出先经过电抗器再经过电容器，不得接反。
Confirm the Input/output line. Inverter output line first connect to Reactor then to capacitor, next to motor.
- 4、 正弦波滤波器除接线端子部分外，其它部位均是绝缘的，无需额外进行绝缘处理。
The Sine Filters are all insulated expect the terminal blocks. No need additional insulation processing.
- 5、 正弦波滤波器底脚支架.上有接地孔位，请保持电抗器可靠接地，不然会产生悬空电位而产生放电。
The rack of reactor has ground hole, please properly connect to ground to avoid current leakage.
- 6、 请保证安装场所有良好的通风条件，因为电容器无法在高温环境下运行。
To ensure the free flow of air around the machine as the capacitor can't working at environment of high temperature.

选型表 Type Selection Table

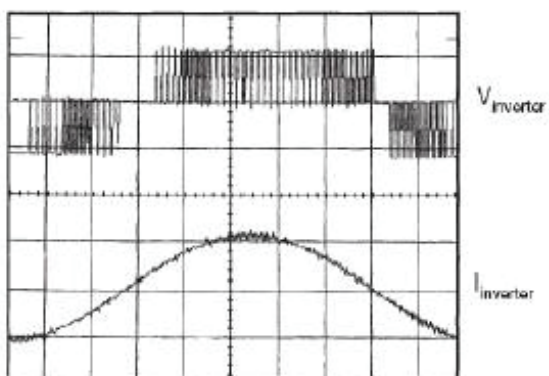
型号 Model	额定电流(A) Rated Current	变频器功率 (KW) Invertor Capacity	外形尺寸 (L*D*H mm) Dimension	安装尺寸 (A*B mm) Installation Size	安装孔径 Hole Size
DF602-5A-01	5A	1.5	160*180*160	80*80	10*18
DF602-7A-01	7A	2.2	160*180*160	80*80	10*18
DF602-10A-01	10A	3.7/4.0	190*220*200	80*85	10*18
DF602-15A-01	15A	5.5	190* 230*200	80*95	10*18
DF602-20A-01	20A	7.5	225*250*230	120*85	10*18
DF602-30A-01	30A	11	225*280*230	120*115	12*20
DF602-40A-01	40A	15	260*290*270	135*115	12*20
DF602-50A-01	50A	18.5	260*300*270	135*125	12*20
DF602-60A-01	60A	22	260*310*270	135* 135	12*20
DF602-80A-01	80A	30	290*330*320	135*145	12*20
DF602-90A-01	90A	37	350*330*380	160*130	12*20
DF602-120A-01	120A	45	350*350*380	160*130	12*20
DF602-150A-01	150A	55	350*370*380	160*150	12*20
DF602-200A-01	200A	75	350*410*380	160*190	12*20
DF602-250A-01	250A	90/110	350*440*380	160*220	12*20
DF602-290A-01	290A	132	420* 480*460	160* 250	12*20
DF602-330A-01	330A	160	420*500*460	160*270	12*20
DF602-390A-01	390A	185	420*530*460	160*300	12*20
DF602-450A-01	450A	200	420*540*460	160*310	12*20
DF602-490A-01	490A	220	480*550*520	160*320	12*20
DF602-530A-01	530A	250	480*570*520	160*340	12*20
DF602-600A-01	600A	280	480*590*520	160*380	12*20
DF602-660A-01	660A	300/315	480*610*520	160*380	12*20
DF602-800A-01	800A	355/400	550*630*600	160* 400	12*20
DF602-1000A-01	1000A	450	550*650*600	160*. 420	12*20

产品结构示意图 Structure Diagram

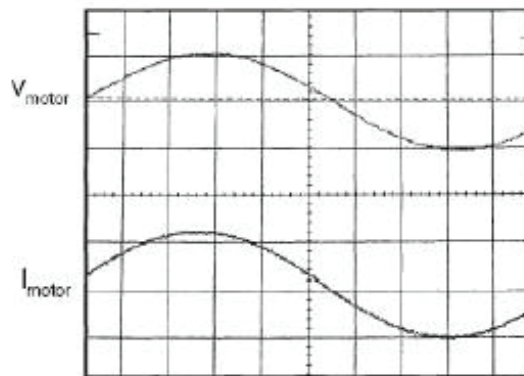


使用效果示意图 Effect sketch map

使用前



使用后



备注：以上规格为公司标准产品，可根据客户产品定制设计产品性能和尺寸外观。

Remark: Customized products are available according to special performance or dimensions requirements

更多产品请登陆官方网站：<http://www.dephir.com>

For more products please go to official website: <http://www.dephir.com>